

ELTONS

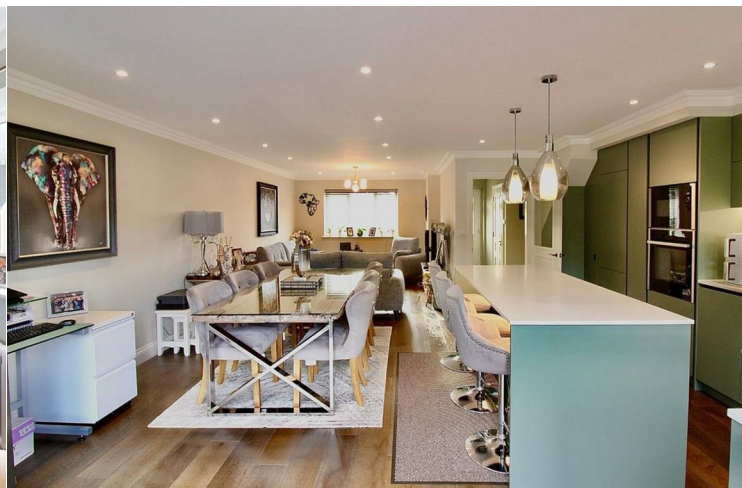
Estate Agents

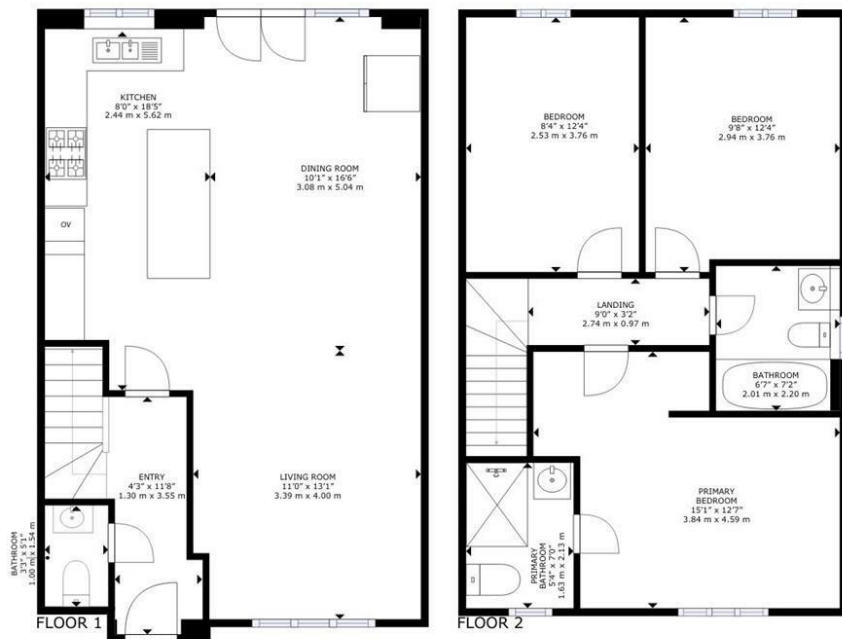


TREE COTTAGE HOLM OAKS HORSHAM

£525,000
FREEHOLD

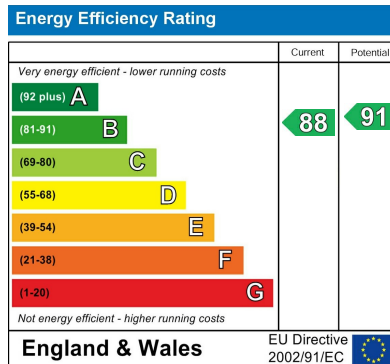
- IMMACULATE THREE DOUBLE BEDROOM SEMI DETACHED HOUSE
- MODERN KITCHEN WITH INTEGRATED APPLIANCES
- MASTER BEDROOM WITH EN-SUITE SHOWER ROOM
- FAMILY BATHROOM WITH SHOWER OVER BATH
- DRIVEWAY FOR THREE CARS
- SPACIOUS OPEN PLAN KITCHEN/DINING/LIVING AREA FINISHED TO THE HIGHEST SPECIFICATION
- DOWNSTAIRS W/C
- TWO FURTHER DOUBLE BEDROOMS
- LANDSCAPED REAR GARDEN





ELTONS
Estate Agents

GROSS INTERNAL AREA
FLOOR 1: 528 sq. ft, 49 m² FLOOR 2: 513 sq. ft, 48 m²
TOTAL : 1,041 sq. ft, 97 m²
SIZES AND DIMENSIONS ARE APPROXIMATE, ACTUAL MAY VARY.



Agents Note: Whilst every care has been taken to prepare these particulars, they are for guidance purposes only. All measurements are approximate and are for general guidance purposes only and whilst every care has been taken to ensure their accuracy, they should not be relied upon and potential buyers/tenants are advised to recheck the measurements

Eltons Estate Agents Horsham 01403 299 771
13 - 15 Queen Street
Horsham
West Sussex
RH13 5AA
sales@eltons.co.uk
eltons.co.uk

ELTONS
Estate Agents